



DVD Captioning & Subtitling and CaptionMaker

(Released March 1, 2007)

Table of Contents

DVD CAPTIONING & SUBTITLING AND CAPTIONMAKER	1
TABLE OF CONTENTS	1
DVD CAPTIONING AND SUBTITLING OVERVIEW	2
DVD Multiple Language Capability.....	2
Create a CPC Time-Stamped File First	2
DVD CAPTIONING	2
DVD SUBTITLING.....	3
Export DVD Subtitle Files.....	3
Choose DVD Subtitle Device	4
Create a Time-Stamped File	4
Adobe Encore.....	4
Export DVD Subtitle Text Files	5
Export DVD Subtitle Picture Files	7
Font Style and Size	7
Bold Text	7
Color Adjustment.....	8
Margin Adjustment	9
Full Screen View	9
Export DVD Subtitle Picture File.....	9
Script Name	10
Image Prefix.....	10
Description.....	10
Graphic File Size	10
Verify Subtitle Rendering.....	11
Final Step: Export the File	11
Examples of Navigation (Text) Files.....	12
Importing DVD files	14
Foreign Language Subtitles	14
Group 1 Languages.....	14
Group 2 Languages.....	14
Group 3 Languages.....	14
Group 4 Languages.....	15
Choosing the Right Script Font	15

DVD Captioning and Subtitling Overview

With CPC CaptionMaker software, you can both caption and subtitle DVD. Captioning and subtitling are very different, and there are different options to choose and different procedures to follow in each case.

You need a DVD authoring system to caption or subtitle a DVD. The function of the CaptionMaker is to generate the appropriate caption or subtitle files needed by the DVD authoring system. Please note that the CaptionMaker does not have the capability to add captions or subtitles directly to the DVD medium.

DVD Multiple Language Capability

A DVD disk has different tracks to hold the caption and subtitle data. There are 6 tracks for captioning and 32 tracks for subtitling. So you can caption the same DVD disk in up to 6 languages and also subtitle in up to 32 languages. This makes the DVD a medium much more accessible than conventional videotape. A DVD user can press a button to display captions or subtitles on any one of the tracks as long as caption or subtitle data has been added to those tracks. In practical use, a DVD is typically captioned and/or subtitled in just a few languages.

Create a CPC Time-Stamped File First

Create a time-stamped script using the CaptionMaker software exactly the same as you would create a file for conventional videotape (See “Chapter 4: Tutorial”). Then you need to export the file to the appropriate DVD authoring system. You may create multiple files for multiple languages using the CaptionMaker and then you can add all those languages to the DVD using the DVD authoring system. See the “Import/Export” section in Chapter 3 for details on creating the time-stamped file in one language from scratch and then producing the time-stamped file in another language in almost no time.

DVD Captioning

Creating a DVD caption file is relatively simple compared to creating a DVD subtitle file. A DVD caption file is universal for all DVD authoring systems. To create a DVD caption file, use the same procedure as you would to create a caption file for conventional video. Although you are not using an encoder or a captioning device for this task, you still need to choose a device in order to set the software in caption mode.

Use the step-by-step procedure below, in which the Spruce DVD system is used as an example.

1. Choose EEG DE241 CG as a default caption device (*Caption → Device → EEG DE241 CG*).
2. Create the time-stamped file. (Follow instructions in “Chapter 4: Tutorial”.)
3. Export the captions to the proper authoring system (*File → Export → Caption Formatted File → Spruce DVD Caption*).
4. Import the above exported file from CPC into the DVD authoring system.
5. Follow the DVD authoring system instructions to create the DVD with captions.

Here is a sample DVD caption file exported from CPC CaptionMaker for the Spruce DVD authoring system.

Scenarist_SCC V1.0

```
00:19:54:11    94ae 9420 94d0 49a7 cd20 c154 2054 c845 204c 4546 5480 9470 4f46 2054 c845 20d3
                4352 4545 ceae 942c 8080 8080 942f

00:19:56:01    94ae 9420 94d0 d34f 2043 c1d0 5449 4fce d380 9470 4f46 2057 c8c1 5420 4920 d3c1
                d980 942c 8080 8080 942f

00:19:57:09    94ae 9420 94d0 c1d0 d045 c152 20c1 5420 54c8 4520 4c45 4654 9470 4f46 2054 c845
                20d3 4352 4545 ce2c 2054 4f4f ae80 942c 8080 8080 942f

00:20:00:03    942c
```

```
00:20:00:23    94ae 9420 9454 9723 ce4f 5720 49a7 cd20 c154 2054 c845 2052 49c7 c854 94f8 97a1
                4f46 2054 c845 20d3 4352 4545 ce2c 942c 8080 8080 942f

00:20:02:17    94ae 9420 9454 97a2 d34f 20cd d920 43c1 d054 494f ced3 20c1 d0d0 45c1 5280 94f8
                97a2 c154 2054 c845 2052 49c7 c854 ae80 942c 8080 8080 942f
```

A number of DVD authoring systems are listed in the *Export* menu, including the following:

- ◆ Daikin DVD Caption
- ◆ Sonic Solutions DVD Caption
- ◆ Spruce DVD Caption

Internally all DVD caption files are the same. The only differences are the header lines inside the file and the file extensions. If you have a DVD authoring system other than the above three, please consult the manual and inform CPC of the differences. We will try to incorporate the changes and add your DVD authoring system to the *Export DVD Caption* list. In the meantime, call us and we will try to make the minor changes needed to use the file with your authoring system.

DVD Subtitling

Creating a DVD subtitling file is much more involved and complex than DVD captioning. It is recommended that you read this entire section. For some DVD authoring systems, you can export two kinds of files for DVD subtitling:



- ◆ Text file format
- ◆ Picture file format

If you create a text file format, you must choose the font from the DVD authoring system and the DVD authoring system will control the subtitles' appearance. On the other hand, if you choose the picture file format, you will choose the font from the CaptionMaker and you will have total control of the appearance. It's your choice.

If you have a video with 1,000 subtitles in the text file format, the CaptionMaker will create only one text file and the exported file size will be very small (perhaps 50KB).

If you have a video with 1,000 subtitles created in the picture file format, the CaptionMaker will create 1,001 files – 1,000 Windows picture files (.bmp, .tif etc.) and 1 text (navigation) file (.txt, .scr etc.). The size of all the files together could be anywhere between 50MB and 500 MB. Because of the enormous size of these files, they are automatically exported to a zipped file. This is discussed in more detail later.

If you feel you already understand the concept and would like a quick rundown of the steps taken to create DVD subtitling picture files, here is a brief overview using the *Spruce DVD Maestro TIF Graphics (*.zip)* as an example:

1. First, choose the subtitling device (*Subtitle* → *Device* → *DVD/DV2000/Webcast Subtitle* → *Spruce DVD Maestro TIF Graphics (*.zip)*).
2. Create the time-stamped file (see “Chapter 4: Tutorial”).
3. Adjust the font settings, background color, margins, letter spacing, etc. (Use the icons  and  labeled Preview Window on the right side)
4. Export the file (*File* → *Export* → *Spruce DVD Maestro*).

Export DVD Subtitle Files

Here is a detailed discussion on how to export DVD subtitle files – both text and picture formats.

Choose DVD Subtitle Device

Choose the appropriate DVD subtitle device. You must *not* leave the device as a default caption device. To choose a subtitle device, click on the *Subtitle* menu at the top of the screen and choose *Device...*

Choose the appropriate subtitle device and you are ready to begin.

CPC can export DVD subtitling files for the following DVD authoring systems:

- ◆ Apple DVD StudioPro
- ◆ Adobe Encore
- ◆ Daikin Scenarist (Now under Sonic Solution)
- ◆ DVD CVC
- ◆ Pinnacle Impression
- ◆ Sonic Solutions
- ◆ Spruce DVD Maestro
- ◆ Generic DVD System

Some of the above systems support multiple formats, which CPC also supports. Details will be discussed in this chapter.

After you have chosen the right device, you must export the file to your DVD authoring system format. For example, if you are using a Daikin system, choose the first option (*Daikin Scenarist TIF Graphics*).

Note on “Generic DVD System” Option If your DVD system is not one of the brand names listed and if you know the specifications of the picture files, you may choose this option. You should select the proper colors and picture file size from the choices described below. If you have trouble making the right choices, you may contact us and we will try to implement your brand of DVD system in the CaptionMaker software.

Create a Time-Stamped File

At this point we are assuming that you have already created a subtitle file for the video in which you both positioned and time-stamped the subtitles. Follow the steps in “Chapter 4: Tutorial” to create the time-stamped file using the video and synchronize the subtitles with the time code. (In other words, the process of repeatedly pressing the plus key [+] to capture time codes is already over.)

Adobe Encore

The exported file for Adobe Encore is essentially a text file with a special formatting. Note that Adobe Encore requires these files to be in UTF-8 format, but CaptionMaker exports them in standard text format. To convert them to UTF-8, open them in Windows Notepad and then “Save As” and select UTF-8 encoding.

Sample File

00:00:33:13	00:00:36:25	Up until now, we have been using pop-on captions.
00:00:36:27	00:00:41:08	When a new caption pops on, the old caption disappears.

Export DVD Subtitle Text Files

At this point you are ready to export DVD subtitle files in text format. To export DVD subtitle text, go to File → Export; select the radio button DVD/DV2000/Webcast Subtitle and choose the format from the drop down list

- [DVD Studio Pro \(ver. 3\)](#)
- [Sonic Solutions Text \(*.txt\)](#)
- [Spruce STL Script File \(*.stl\)](#)

STL Subtitle Text file exports for Spruce & DVD StudioPro (Simple and Extended Positioning)

There are two STL text exports for both DVD StudioPro and Spruce DVD Maestro with “standard” or “extended” positioning information.

The standard positioning, which is to be used if all your subtitles are set to the Center and Bottom. On the other hand the extended positioning is to be used if you have subtitles on different parts of the screen. Note that if you are doing extended positioning, you will have to make sure that the fonts and sizes you use to format the subtitles are the same fonts and sizes you use in DVD StudioPro and Spruce to build the DVD.

Extended positioning actually generates internally all the subtitle images (tiffs) according to your choice of font then finds the exact positions of the subtitles. The file does not contain the subtitle images (tiff), it contains the actual text.

Before exporting the file, make sure the margins - top, bottom, left and right are set correctly. In most cases you need to set all margins to 0. In other cases, you need to set the margins as 72 for left and right and 48 for top and button depending on what settings you will use in DVD StudioPro and Spruce DVD authoring software.

[After you choose the appropriate option, type the file name to save the file and you are done. Below are two sample file formats for the simple positioning and extended positioning.](#)

Spruce STL file (Simple Positioning)

```
$FontName           = Arial
$FontSize           = 20

$HorzAlign          = Center
$VertAlign          = Bottom
$XOffset            = 0
$YOffset            = -48

00:00:00:01 , 00:00:01:28
00:00:02:00 , 00:00:07:28 , [music]
$HorzAlign = Left
$XOffset   = 72
00:00:08:00 , 00:00:09:16 ,I'm at the left|of the screen.
00:00:09:18 , 00:00:11:00 ,So captions|of what I say
00:00:11:02 , 00:00:12:28 ,appear at the left|of the screen, too.
00:00:13:00 , 00:00:14:14
```

```

$HorzAlign = Right
$XOffset   = -72
00:00:14:16 , 00:00:16:09 ,Now I'm at the right|of the screen,
00:00:16:11 , 00:00:18:07 ,so my captions appear|at the right.
00:00:18:09 , 00:00:19:17
$HorzAlign = Center
$XOffset   = 0
00:00:19:19 , 00:00:21:02 ,^INow I am off screen.
00:00:21:04 , 00:00:22:23 ,^ITo indicate that|^II'm off screen,
00:00:22:25 , 00:00:24:25 ,^Iwhatever I say is italicized.

```

Spruce STL file (Extended Positioning)

```

$HorzAlign = Center
$XOffset   = 0
$VertAlign = Bottom
$YOffset   = -48

00:00:02:00 , 00:00:07:28 , $ music $
$HorzAlign = Center
$XOffset   = -196
00:00:08:00 , 00:00:09:16 ,I'm at the left|of the screen.
$HorzAlign = Left
$XOffset   = 72
00:00:09:18 , 00:00:11:00 ,So captions|of what I say
$HorzAlign = Center
$XOffset   = -168
00:00:11:02 , 00:00:12:28 ,appear at the left|of the screen, too.
$HorzAlign = Right
$XOffset   = -72
00:00:14:16 , 00:00:16:09 ,Now I'm at the right|of the screen,
00:00:16:11 , 00:00:18:07 ,so my captions appear|at the right.
$HorzAlign = Center
$XOffset   = 0
00:00:19:19 , 00:00:21:02 ,^INow I am off screen.
00:00:21:04 , 00:00:22:23 ,^ITo indicate that|^II'm off screen,
00:00:22:25 , 00:00:24:25 ,^Iwhatever I say is italicized.

```

Note: The \$Xoffsets are different for different subtitles in the extended positioning compared to the simple positioning.

Sonic Producer text file

1	00:00:02:00	00:00:07:28	[music]
2	00:00:08:00	00:00:09:16	I'm at the left of the screen.
3	00:00:09:18	00:00:11:00	So captions of what I say
4	00:00:11:02	00:00:12:28	appear at the left of the screen, too.

Sonic Solutions Text File

1	00:00:02:00	00:00:07:28	[music]
2	00:00:08:00	00:00:09:16	I'm at the left of the screen.
3	00:00:09:18	00:00:11:00	So captions of what I say
4	00:00:11:02	00:00:12:28	appear at the left of the screen, too.

For DVD subtitle picture file format, go through a few more steps described below.

Export DVD Subtitle Picture Files

To create DVD subtitle picture files, do the following two steps you used to create subtitle text files earlier:

1. Choose the proper DVD device
2. Create a time-stamped file

Then go through a few more steps to complete the job (detailed instructions follow):

3. Choose font size and style
4. Assign color
5. Adjust margins
6. Export DVD graphics file

Font Style and Size

Click on the Image Font icon  on the Preview Window and a dialog box will open.

Make sure to choose an appropriate font. For most Windows fonts, sizes 16 to 20 will work well. If each subtitle contains a lot of text, use a smaller font size. If you use a font that is too large, lines will wrap unexpectedly within subtitles. If this happens, reduce the size.

Note on Kerning Kerning is the amount of space between characters. If you use a negative value, the characters will move closer. If you use a positive value, the characters will separate.






For the best result, CPC recommends using the following font attributes. Of course, you can experiment with these numbers to see how they change the final picture file.


- ◆ Arial 18 or 20 **Bold** font
- ◆ Character Pixel Kerning = -2 (space between two characters)
- ◆ Line Pixel Spacing = 5 (extra space between two lines of a two line subtitle)
- ◆ Space Character Width = 0 (space between two words)
- ◆ Character Border = 2

“Double Bold” Tip To achieve the best output, use Arial Bold 18 and also select the text and apply bold in the CPC program. See below.

Bold Text

To make the text bold, click on the header **Caption/Subtitle** above the Work Area. This will highlight the entire text.

E	A	Caption/Subtitle
>		abcdefghijklmnopqrstuvwkyz
>		ABCDEFGHIJKLMNOPQRSTUWVWXYZ
>		Concentreer je liever op je werk waar ik je zo riant voor betaal.
>		
>		

Now click on the Bold  icon on the toolbar. This will make the whole text bold as shown above. Using “double bold” (applying the bold option in addition to using a bold font) should produce the best result.

Keep in mind that if you choose a font too large, the subtitles will break into multiple lines and you will lose your formatting. When you are generating the subtitle files, you will receive an alert if that happens. So we suggest that you choose a smaller font and keep the subtitles as compact as possible.

Color Adjustment

Click on Image  icon on the *Preview Window* panel next to the  icon.

Choice of Preview background color has no effect on the final picture file. This is only used for viewing images on the CaptionMaker screen.

Background Type is not accessible to the user. The various DVD authoring systems use different background color information to superimpose the picture files on the video properly. The background color does not show on the video. It is needed only to create the picture files.

Anti-Alias smoothes out the contours of characters and gives a sharp look that makes the subtitles look good. Otherwise the characters’ edges would appear jagged.

If you would like to see the subtitles in white with a black border, **do not** change the foreground, background, border and anti-alias colors. They have been preset for the appropriate DVD authoring systems.

Some authoring systems, such as CVC, Pinnacle and Sonic, do not allow for any choice of colors. For Daikin and Spruce, you may change the foreground, background, border and anti-alias colors to those you desire. Default user-defined colors (which are same as the final color mappings) are listed in the table that follows.

DVD System	Foreground *	Background*	Border*	Anti-Aliasing*
CVC	Fixed - White	Fixed - Gray	fixed	Fixed - Light Gray
Daikin	(255,255,255) White	(0,0,128) Gray	(0,0,0) Black	(128,128,128) Light Gray
Pinnacle	Fixed - White	Fixed - Gray	fixed	fixed - Light Gray
Sonic	Fixed - White	fixed - Gray	fixed	fixed - Light Gray
Spruce	(255,255,255) White	(0,0,128) Gray	(0,0,0) Black	(128,128,128) Light Gray
Generic	(255,255,255) White	(64,64,64) Gray	(0,0,0) Black	(128,128,128) Light Gray

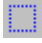
Daikin, Sonic Solutions and Spruce choose to use colors different from the user-selected colors to create the picture files. If you open a picture file using Adobe Photoshop or any other image-viewing software, you will see the following colors associated with the picture.

DVD System	Foreground*	Background*	Border*	Anti-Aliasing*
CVC	(255,255,255) White	(64,64,64) Gray	(0,0,0) Black	(128,128,128) Light Gray
Daikin	(0,0,255) Blue	(255,255,255) White	(0,0,0) Black	(255,0,0)
Pinnacle	(255,255,255) White	(0,0,255)	(0,0,0) Black	(128,128,128) Light Gray
Sonic	(0,0,255) Blue	(255,255,255) White	(0,0,0) Black	(255,0,0) Red
Spruce	(0,0,255) Blue	(255,255,255) White	(0,0,0) Black	(255,0,0) Red
Generic	User defined	User defined	User defined	User defined


* Numbers in parentheses in the table above are Red, Green and Blue, respectively.

Warning on Colors In general, subtitle characters are white (foreground) with black borders. After creating the picture files, you might notice the colors used in the picture file are not same as the colors used on the *Image Colors* dialog box, but they must be same as those described in the above table.

Margin Adjustment

To adjust the margins, click on the Margin icon . The CaptionMaker software automatically sets the margins at 10% of the size of the screen. You do not need to change them unless you have a special requirement.

Full Screen View

Click on the *Pop Up Preview Window*  icon to see the subtitle picture full-screen. This is how the subtitle will look on the DVD.

Export DVD Subtitle Picture File

To export DVD subtitle picture files, follow these instructions:

1. Point to the *File* menu.
2. Click on *Export* and a new menu dialog box opens up.
3. Select the radio button *DVD/DV2000/Webcast Subtitle*, and choose the desired format from the drop-down list.
4. Now click on the *Browse* button to indicate where to save the file.
5. Then click on *Next*.

You will need to furnish the following information:

- Image Prefix
- Description (optional)
- Graphics file size

Script Name

The name of the script (navigation) file. The default name is automatically going to be assigned as the name of the CaptionMaker file. If you like, you may change it to any name (preferably up to 8 characters).

Image Prefix

The Image Prefix can be anything up to four characters. The reason for limiting the length to four is to accommodate 9,999 caption images, which at this point in time is more than you will ever need. Now, you may ask, why would a 5-character-long image prefix not be able to accommodate 9,999 caption images?

Some DVD authoring systems do not allow an image file name to be more than 8 characters. The first four characters of the file name constitute the Image Prefix, and the last four denote chronological order (from 0000 to 9999).

Description

You may add a video description in this field. This information will be added to the script (navigation) file. For DVD subtitles to work properly, it is doesn't matter whether you add a name or not.

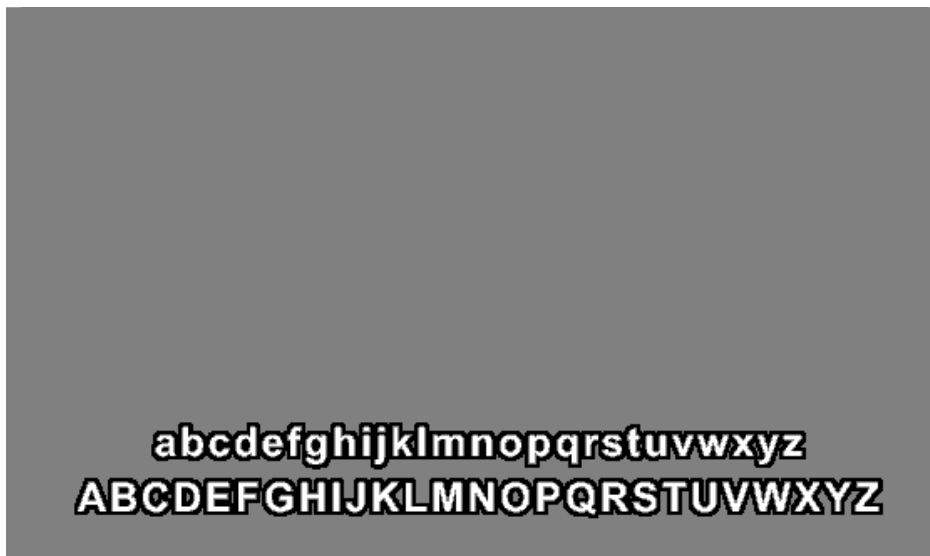
Graphic File Size

This field is normally grayed out for most DVD authoring system. It shows the size of the graphic (picture) files. Some DVD authoring systems ask for the picture to be the size of the actual subtitle and others require a full-size picture file (720x480 for NTSC).

The picture file screen sizes for all DVD systems are listed below.

DVD System	Picture Size
CVC	Each bitmap size will be the actual size of each subtitle
Daikin	Each bitmap size will be full-screen size
Pinnacle	Each bitmap size will be full-screen size
Sonic	Each bitmap size will be the actual size of each subtitle
Spruce	Each bitmap size will be the actual size of each subtitle
Generic	Each bitmap size will be full-screen size

After you are done with these, click on the Finish button. The CaptionMaker will create a zipped file or text file with the specified name. Examples of these two sizes of DVD picture files follow.



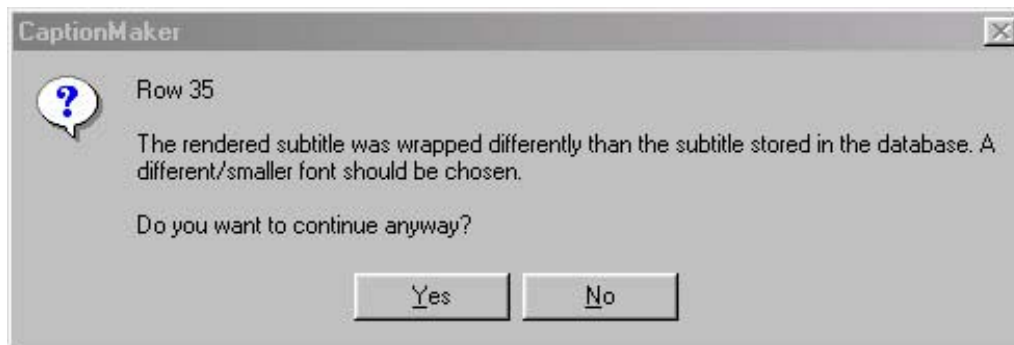
DVD bitmap's size is equal to the full-screen size of the video.



DVD bitmap's size is equal to the actual size of each subtitle.

Verify Subtitle Rendering

If this box is selected, at the time of exporting the picture files the CaptionMaker will check any unwanted breaking of each and every subtitle. This unwanted breaking could happen if you choose a large font. For example, a two-line subtitle may break into a three-line subtitle. In that event, the following dialog box will open.



The CaptionMaker will not bring the cursor to the exact row, but the Preview Window will show which row has the problem. If you would like to fix the problem, click on the No button and check the text in that row. You have two solutions:

1. Break the row up into two rows, or
2. Change the font to a smaller size.

The recommended remedy is to break up the text into two lines. You probably will not want to change the default font for the whole production just to accommodate one oversized row. After doing any one of these, once again follow the same procedure of exporting the DVD formatted subtitles.

Final Step: Export the File

Finally, click on the Finish button to export the subtitle files. After you export the files, locate the folder where you exported the zipped file(s). Unzip the files to sample-check a few of these files. The text (script) file should look like one of the following sample files. The picture file should look like one of the two bitmap subtitle pictures shown previously under "Graphics File Size".

Note on Number of Picture Files If for some reason you see fewer files than you expected, don't panic. The blank lines in the caption file are ignored, decreasing the number of subtitles.

Also duplicate/triplicate captions marked with the same time code are formed into a single picture file, decreasing the total number of files.

Examples of Navigation (Text) Files

CVC Navigation File

```
# DVD Subtitle file 10/31/01 1:55:53 PM
# Filename: Video.scr
# Language: 09 - English
# Subtitles: 42
#
# Start: 00:19:55:04
# End: 00:21:19:18
# Font: Arial
#
Vide0001.bmp 00:19:55:04 00:19:56:20 576 384 72 48
Vide0002.bmp 00:19:56:22 00:19:58:04 576 384 72 48
Vide0003.bmp 00:19:58:06 00:20:00:02 576 384 72 48
Vide0004.bmp 00:20:01:20 00:20:03:13 576 384 72 48
```

Daikin Navigation File

```
st_format 2
#####
# Daikin Scenarist Script
#-----
# Filename: Daik.nav
# Created: 7/17/00 8:10:03 PM
# Time Code: DropFrame
# Video Mode: NTSC
# Author: CPC CaptionMaker Version 1.10
#####

TV_Type NTSC
Tape_Type NON_DROP
Base_Time 01:03:24:22
Pixel_Area (48 430)
Display_Area (72 48 646 430)
Color (2 4 3 3)
Contrast (14 15 15 0)
BG ( 255 255 255 = = = )
PA ( 0 0 0 = = = )
E1 ( 0 0 255 = = = )
E2 ( 255 0 0 = = = )

Directory
#####
SP_NUMBER START END FILE_NAME
0001 01:03:24:22 01:03:26:19 Daik0001.tif
0002 01:03:26:21 01:03:27:29 Daik0002.tif
0003 01:03:28:01 01:03:31:06 Daik0003.tif
```

Pinnacle Impression Navigation File

```
00:19:55:04 00:19:56:20 VDO0001.bmp
00:19:56:22 00:19:58:04 VDO0002.bmp
00:19:58:06 00:20:00:02 VDO0003.bmp
00:20:01:20 00:20:03:13 VDO0004.bmp
00:20:03:15 00:20:05:11 VDO0005.bmp
```

Sonic Solutions Navigation File

```
Soni0001.tif 01:03:24:22 01:03:26:19 206 086 072 345
Soni0002.tif 01:03:26:21 01:03:27:29 194 086 072 345
Soni0003.tif 01:03:28:01 01:03:31:06 270 086 072 345
Soni0004.tif 01:03:31:08 01:03:33:05 278 086 369 345
```

Spruce Navigation File

```
st_format 2
#####
# Spruce Technologies SON Script for DVDMaestro
#-----
# Filename: Spru.nav
# Created: 7/17/00 8:14:08 PM
# Time Code: DropFrame
# Video Mode: NTSC
# Author: CPC CaptionMaker Version 1.10
#####

TV_Type NTSC
Tape_Type NON_DROP
Base_Time 01:03:24:22
Pixel_Area (48 430)
Display_Area (72 48 646 430)
Color (5 0 2 9)
Contrast (14 15 15 0)
Directory
#####
SP_NUMBER START END FILE_NAME
Display_Area (72 345 277 430)
0001 01:03:24:22 01:03:26:19 Spru0001.tif
Display_Area (72 345 265 430)
0002 01:03:26:21 01:03:27:29 Spru0002.tif
Display_Area (72 345 341 430)
0003 01:03:28:01 01:03:31:06 Spru0003.tif
```

Importing DVD files

You can import the following two types of DVD files into the CaptionMaker:

- ◆ DVD caption files
- ◆ DVD Text/Script subtitle files (Sonic Solutions and Spruce)

You cannot import DVD subtitle picture files into the CaptionMaker. DVD subtitle files include details of time code, size and position of each subtitle with a picture file for the subtitle (.tif). Because the picture file cannot be easily converted to the actual text into the software, DVD subtitle files cannot be imported into the CaptionMaker.

Foreign Language Subtitles

If you would like to subtitle DVDs in foreign languages using the CaptionMaker software, you can do that too. As of November 2001, CaptionMaker supports all languages supported by ANSI Windows TrueType (TTF) fonts except the Pacific Rim languages such as Chinese, Japanese and Korean. For some languages you have to take special care. CaptionMaker does not support Unicode. CPC has grouped all languages in four groups:

Groups	Languages	Supported by CaptionMaker	Special Action Needed
1	Western European	Yes	No
2	Hebrew, Arabic	Yes (Partially)	Yes
3	All other ANSI Languages	Yes	Yes
4	Pacific Rim Languages (Unicode)	No	N/A

Group 1 Languages

Characters associated with most Western European languages such as these:

- ◆ Dutch
- ◆ French
- ◆ German
- ◆ Italian
- ◆ Portuguese
- ◆ Spanish

These are covered in the standard Windows (US) character set within the first 256 characters. If you import a Microsoft Word document in any of the above languages, you will not need to make any special effort to see all the additional accented characters of that language in the CaptionMaker.

Group 2 Languages

CaptionMaker supports Hebrew and Arabic languages in a limited capacity. Since these two languages use the convention of writing from right to left, the CaptionMaker does not handle proper wrap around at the end of a line. If you prepare the file properly formatted and broken up into individual subtitles and each subtitle is further broken up into individual lines separated by a tab, you can import the file using the option of *Tab Delimited* file (*File* → *Import* menu). After importing the file, you won't be able to do major editing because of the restrictions of improper wraparound.

Group 3 Languages

For all other languages using Windows ANSI TrueType (TTF) font (such as Eastern European languages, Hindi, Bengali, Vietnamese, Thai, etc.) you need to choose the proper font, which may or may not be available in Windows Arial or Times New Roman.

Group 4 Languages

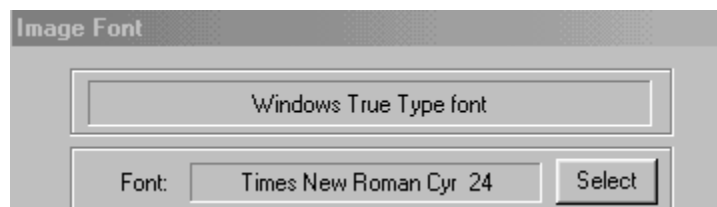
CaptionMaker does not support Unicode. As a result, CaptionMaker does not handle Pacific Rim languages such as Chinese, Japanese and Korean.

Note on TrueType Fonts If you like to use a special font to create subtitles, you must have that font inside the *Windows* → *Font* folder. Simply copy the font in the folder and then it will be available inside the CaptionMaker. Arial and Times New Roman fonts contains characters associated with many languages. They are accessible only by using the *Script* feature, described below.

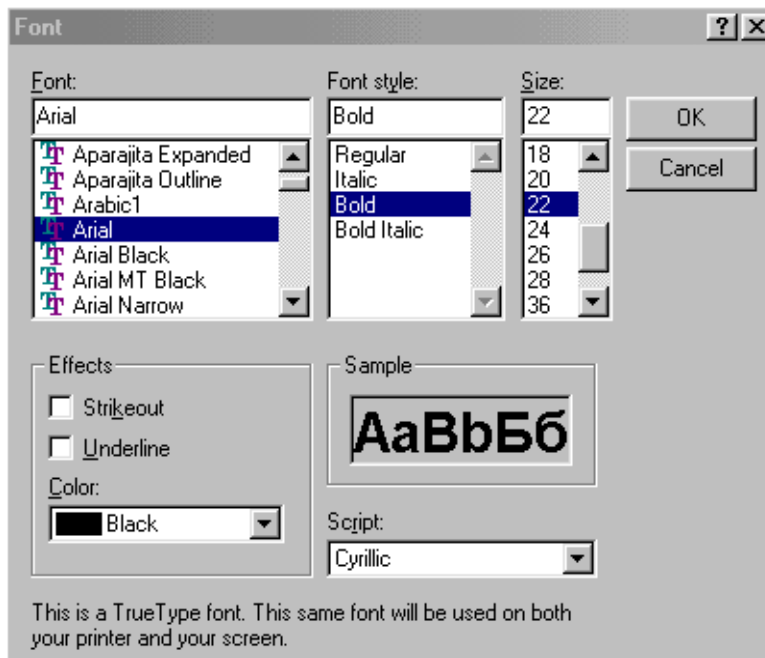
Choosing the Right Script Font

If you have a Microsoft Word or WordPerfect file in a language other than Western European languages such as English, French, German, Italian, Portuguese or Spanish, you may need to manipulate text to see it in the Work Area. If the imported text does not appear in the appropriate language, you need change the font. Windows Arial font covers almost all languages, but if there is a specific font you like to use, you may do so.

1. Click on the Image Font icon on the Operations Center. The *Image Font* dialog box will appear, where current font and script types are shown.
2. Click on the Select button next to the current font type as shown below:



The *Font* dialog box will appear, where the *Script* type can be changed.



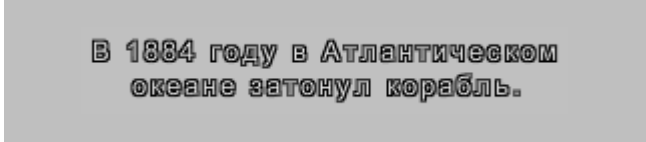
3. Click on the *Script* list box at bottom right. It will probably show the option *Western*.

4. Scroll until you find your desired language group (the vertical scroll bar slide may show no choices available, but still click on the up and down icons, if they are available). Then click on OK.
5. Again click on OK on the *Font* dialog box. CaptionMaker will ask you:

Do you want to update the font used in the edit grid?

6. Click on Yes. Now the Work Area will show the appropriate font for the language in use.

A sample Russian Microsoft Word file (*Russian.doc*) can be found in the *C:\ProgramFiles\CPC\CaptionMaker\Samples* folder. Try to import the file and the Preview Window will show the font properly as below.



But the Caption/Subtitle area will show the text as below:

Â 1884 ãîäó â Àòèàíîè-âñêîì
îéâàíâ çàòîííöë êîðàâëü.

After you change the *Font Script* as described above, you will see the text will also change to this:

**В 1884 году в Атлантическом
океане затонул корабль.**