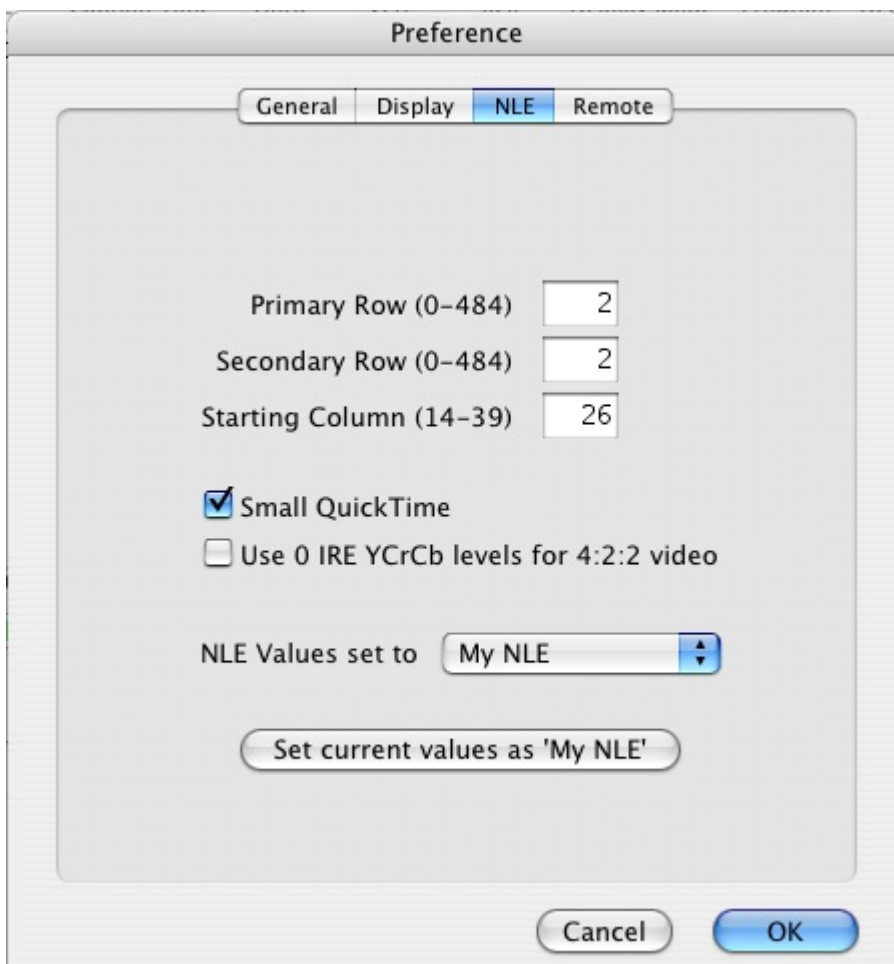


Blackmagic and Final Cut settings for NLE black movie

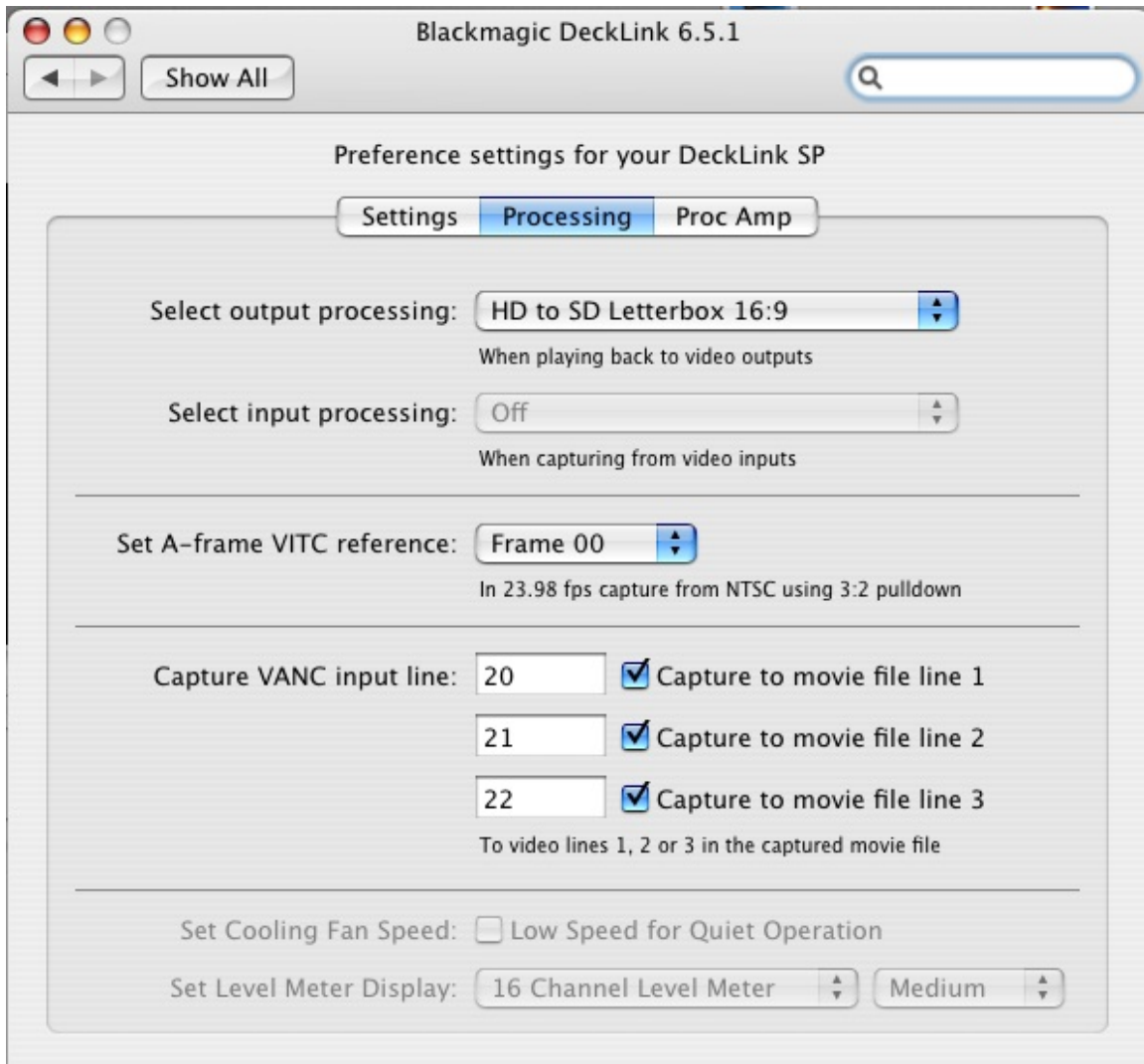
To download the calibration movie go to www.cpcweb.com/blackmovie
Make sure you download the calibration movie that matches your NLE
sequence codec.

The settings below will illustrate what settings will work with
Blackmagic Decklink cards.

MacCaption NLE settings:



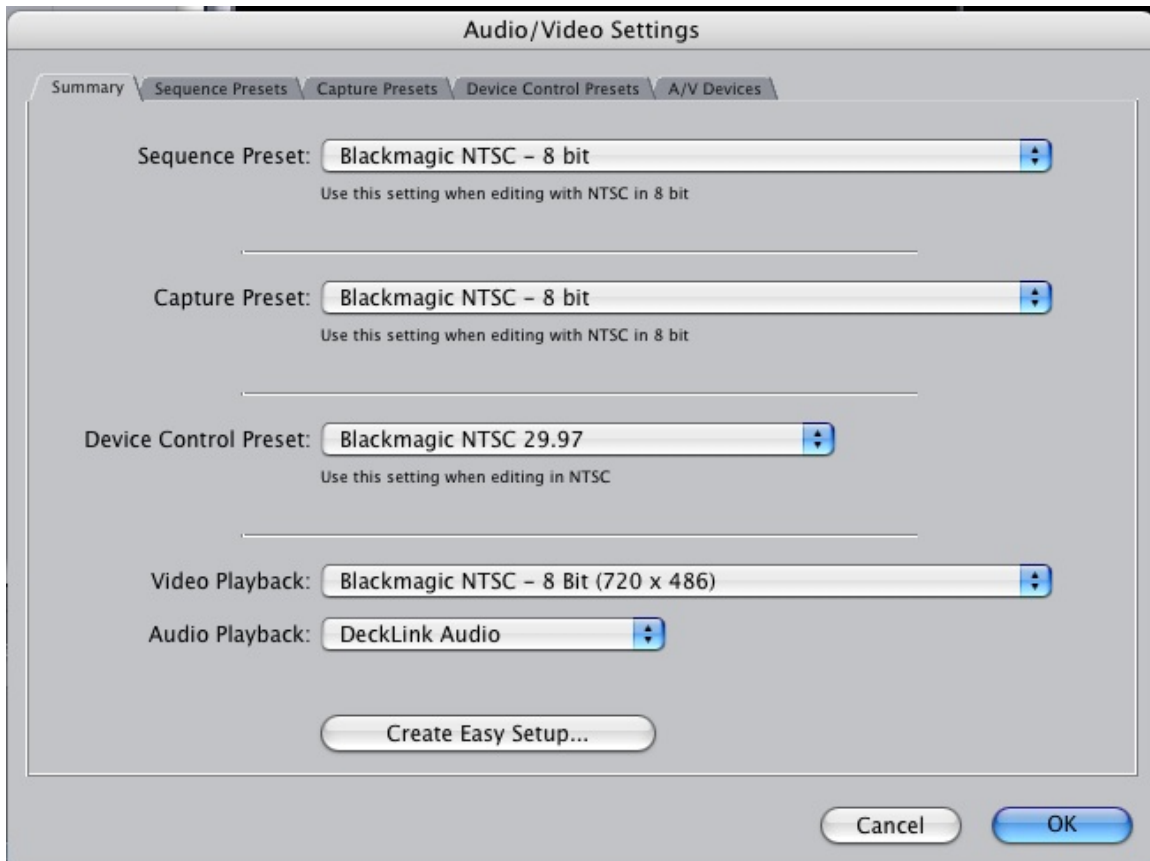
Next is the BlackMagic settings under system preferences:



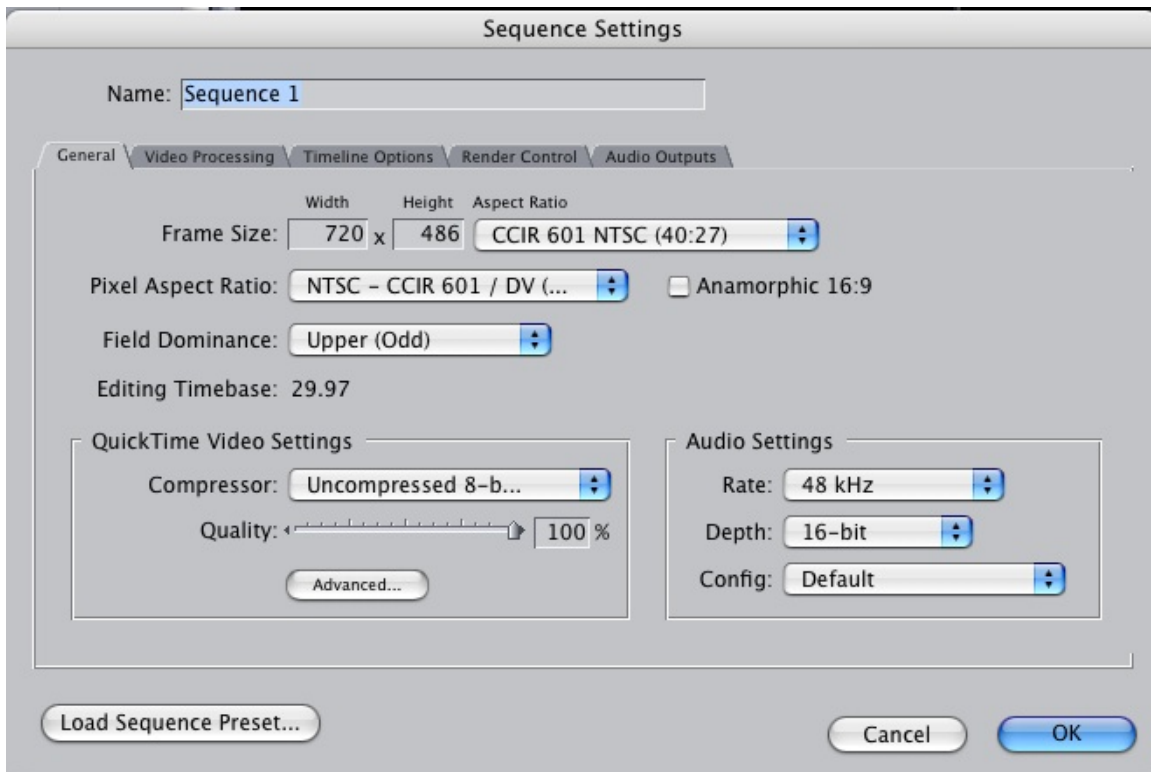
Notice the driver version 6.5.1

Download the latest drivers from <http://www.blackmagic-design.com/>

Next is the Final Cut Pro A/V settings:



Finally the Final Cut Pro sequence settings:



The compressor can also be ProRes 4:2:2. The important part is that the frame size be set to 720 x 486 and that Field Dominance is set to Upper (Odd). Keep in mind that BlackMovie NLE method from CPC is only for SD (standard definition) workflows. DV and HDTV workflows do not apply.