



DISPLAYACAP

EIA-608 Decoder/Character Generator

- EIA-608 decoder with color output & semi-transparent background
- S-Video or composite input/monitor output
- Built-in time code reader (LTC—longitudinal)
- Comprehensive front panel diagnostics to assist with installation
- On-screen setup menus with accompanying help screens.

- ✓ Caption creation
- ✓ Caption monitoring

DISPLAYACAP is required for off-line caption creation & editing. It enables you to see *exactly* how your captions will appear to the viewer without the need for an expensive closed caption *encoder*. DISPLAYACAP emulates the way captions are decoded by a TV set. It's the only product on the market that lets you view captions in color and with transparent & semi-transparent background (color and transparency are defined in EIA-608 *Recommended Practice for Line 21 Data Service*).

DISPLAYACAP was designed with two key features in mind:

- 1). Give the caption creator the most *complete* monitoring possible. Why? Because the one thing a caption creator cares about the most is how his or her captions look on-screen.
- 2). Make the unit as *easy* to install & use as possible. The built-in time code reader means not having to open the cover of your PC to set up your caption editing system. And the front panel LED's help you isolate problems when things go wrong (see Fig. 1.).

Flashes green when RS232 data is detected; turns amber when properly formatted commands are received

Green: "Your PC is sending something to the data port and your serial cable is connected properly"; Amber: "Your PC is sending valid Displayacap commands"

Easy set-up using on-screen menus

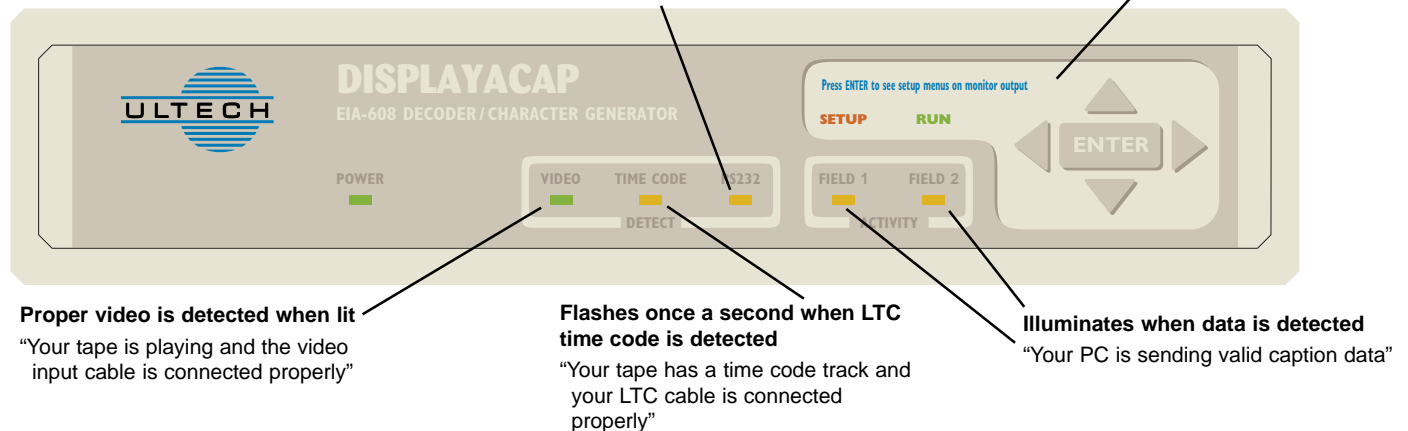


Fig. 1. LED's monitor all aspects of system

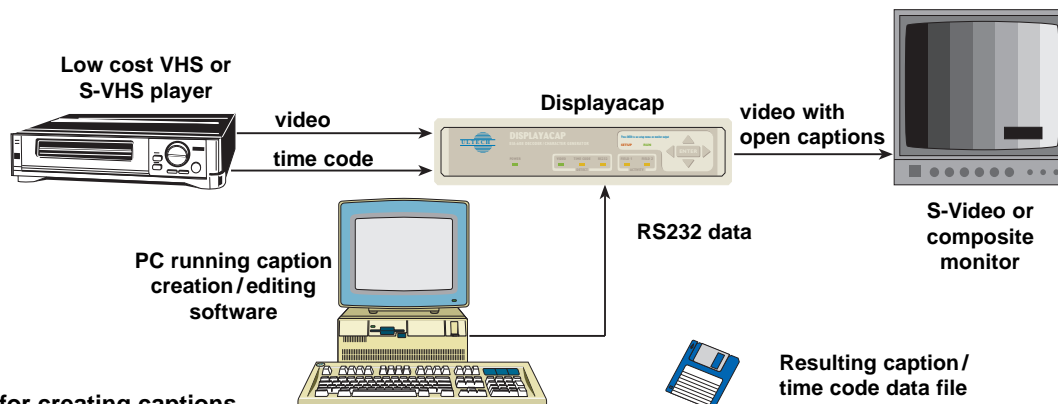


Fig. 2. Hookup for creating captions

DISPLAYACAP operating modes:

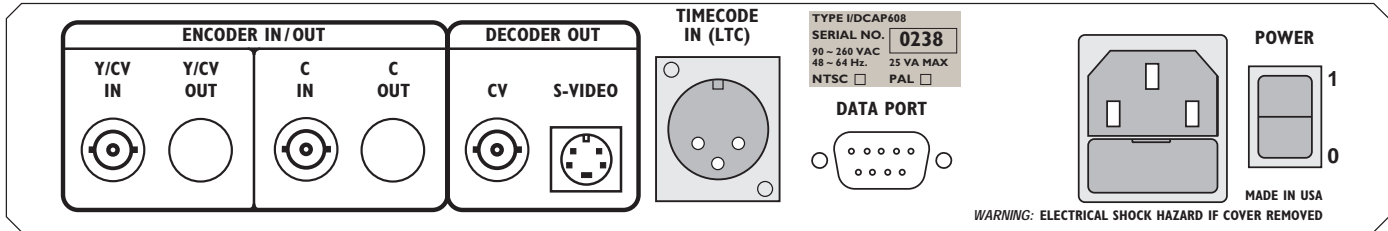
Caption Character Generator Mode

Allows your PC to send caption data to the DISPLAYACAP as if it were a caption *encoder*. But instead of encoding the data in line 21 of the vertical blanking interval, DISPLAYACAP generates the corresponding characters on a video monitor ("open captions"). You can synchronize the display of captions to the video program by using time code. Time code is normally provided on one of the audio tracks of the video tape you are captioning. The PC can either poll the DISPLAYACAP for the time code or it can instruct the DISPLAYACAP to send a message (through the serial data port) when a particular time code has been reached.

Closed Caption Decoder Mode

Decodes captions, text, or extended data services from field 1 or field 2 of the incoming video. Decoder mode is useful for verifying the quality of line 21-encoded programs. Note that the DISPLAYACAP will tolerate imperfect video, unlike other captioning products on the market, allowing you to use low cost consumer-grade VHS players.

Rear Panel



On-screen menus

Pressing the ENTER key on the front panel changes the mode from "run" to "setup". In setup mode an on-screen menu resembling the following appears at the monitor output:

```
MAIN MENU      CURRENT SETTING
Decoder Output: CC1   Line 21
Operating Mode: CharGen
Communications: 38400 (8*1*N)
Exit
<two line help display appears
here to explain menu choices>
Time Code: HH:MM:SS:FF
```

← choices: CC1 CC2 CC3 CC4 T1 T2 T3 T4 XDS

← choices: CharGen Decoder

← choices: 1200 9600 19200 38400 (always 8 bits, 1 stop bit, no parity)

The time code display gives an accurate reading of incoming time code while you are in the setup mode.

Settings are remembered even when power is removed.

Specifications

Front panel controls & indicators

LED's: power, video, time code, PC data,
line 21 data, setup/run modes

Menu-specific cursor/enter keys

Rear Panel controls & connectors

1Vpp analog composite video/Y input BNC,
terminated into 75Ω

C (chrominance) video input BNC,
terminated into 75Ω

1Vpp analog composite video decoder output BNC,
75Ω source impedance

S-Video decoder output, 4 pin mini-DIN

Time code input, balanced, 3 pin XLR plug
DB9F RS-232 serial port

Power

25 Watt, 48 ~ 64 Hz

90 VAC to 260 VAC Universal input

Enclosure

Dimensions: 11.45" W x 2.45" H x 7.85" D
(291mm x 62mm x 199mm)

EMI shielded

Ordering Information

DCAP608-N DISPLAYACAP, NTSC version

DCAP608-P DISPLAYACAP, PAL version

OPT8 XLR jack-to-phono jack adapter

OPT9 S-VHS Y-C break-out cable

Warranty: One year parts and labor

Sales & Applications Support:

ULTECH Corporation, 28C Great Hill Road, Seymour, CT 06483 USA Tel: (203) 735-5805, Fax: (203) 735-6653

Specifications subject to change without notice